

# Peptide Mass Standards Kit for Calibration of AB SCIEX MALDI-TOF™ Instruments



## Operating Instructions

### 1 Product Description

The Peptide Mass Standards Kit for Calibration of AB SCIEX MALDI-TOF™ Instruments includes reagents needed to test instrument function, optimize instrument parameters, and calibrate the mass scale using known peptide standards. The Peptide Mass Standards Kit for Calibration of AB SCIEX MALDI-TOF™ Instruments is designed for use with the Voyager™ Biospectrometry™ Workstation or MALDI-TOF (matrix-assisted laser desorption ionization time-of-flight) mass spectrometry system.

Standards in the kit require minimal preparation and cover a wide mass range. The standards for this kit were chosen on the basis of high purity and consistent results when analyzed using MALDI-TOF mass spectrometry.

#### Applications

Using the mixtures of known peptides and proteins in the Peptide Mass Standards Kit for Calibration of AB SCIEX MALDI-TOF™ Instruments, you can monitor results in a mass range from 900 to 17,000 daltons (Da) for mass assignment, resolution, and sensitivity.

This kit provides the necessary experimental information to determine instrument parameters used in optimizing calibration, resolution, sensitivity, post-source decay (PSD) analysis, and collision-induced dissociation (CID) analysis.

The kit contains calibration and test mixtures you can use for the following:

- **Generate or verify mass calibration**—Calibration Mixtures 1, 2, and 3 include component masses in a mass range from 900 Da to 17,000 Da. Use these mixes as the known masses to generate your calibration, or analyze them as unknowns to determine if your system is calibrated to the mass accuracy required by your application.
- **Optimize and test sensitivity**—Calibration Mixture 1 also contains a low-concentration component (50 fmol/μl of Neurotensin) in the 1,000 to 2,000 Da mass range.
- **Test the setup, resolution, and function of the Timed Ion Selector (TIS)**—The TIS Test Mixture contains 3 peptides with mass differences of 25 Da or less. Set the Precursor Ion Mass to one of the three masses and make sure that the other two masses are screened out by the Timed Ion Selector on a Voyager system with a reflector detector.
- **Evaluate and calibrate in PSD or CID modes**—The PSD and CID Test Standards contain single components you can use to evaluate for expected fragment ions, and to calibrate Voyager systems with reflector detectors in PSD and CID modes.

### 2 Materials

The Peptide Mass Standards Kit for Calibration of AB SCIEX MALDI-TOF™ Instruments includes:

#### Matrices and diluents

- **Matrix A: CHCA**—*p*-cyano-4-hydroxycinnamic acid, 2 vials (5–8 mg/vial)
- **Matrix B: Sinapinic Acid**—3,5-Dimethoxy-4-hydroxycinnamic acid, 2 vials (7–10 mg/vial)
- **Matrix A Diluent**—50% acetonitrile in 0.3% TFA, 2 vials (1 ml/vial)
- **Matrix B Diluent**—30% acetonitrile in 0.3% TFA, 2 vials (1 ml/vial)
- **Standard Diluent**—30% acetonitrile in 0.01% TFA, 1 vial (1 ml/vial)
- **Empty vials with caps**—Ten 0.5-ml vials

Section	Page
1 Product Description.....	1
2 Materials .....	1
3 Preparing Matrix and Standards .....	2
4 Loading Matrix:Standard on Sample Plates.....	3
5 Analyzing Standards .....	3
6 Peptide Standard Spectra and Masses.....	4
7 Storing the Kit.....	7
8 Ordering Information .....	7
9 Technical Support .....	7

## Standards

Standards are provided in lyophilized form and must be reconstituted with 100 µl of Standard Diluent.

Standard	Component	Weight (µg) per vial	Final Concentration (when mixed with matrix)
Calibration Mixture 1	des-Arg <sup>1</sup> -Bradykinin	2.3	1.0 pmol/µl
	Angiotensin I	4.2	1.3 pmol/µl
	Glu <sup>1</sup> -Fibrinopeptide B	5.1	1.3 pmol/µl
	Neurotensin	0.2	50 fmol/µl
Calibration Mixture 2	Angiotensin I	6.5	2.0 pmol/µl
	ACTH (1–17 clip)	10.5	2.0 pmol/µl
	ACTH (18–39 clip)	9.3	1.5 pmol/µl
	ACTH (7–38 clip)	27.5	3.0 pmol/µl
	Insulin, bovine	50.2	3.5 pmol/µl
Calibration Mixture 3	Insulin, bovine	7.1	0.5 pmol/µl
	Thioredoxin, E. coli	80.0	2.75 pmol/µl
	Apomyoglobin, horse	170.0	4.0 pmol/µl
TIS Test Mixture	Substance P-amide	6.9	2.0 pmol/µl
	Pro <sup>9</sup> -Substance P-amide	6.9	2.0 pmol/µl
	Tyr <sup>8</sup> -Substance P-amide	6.9	2.0 pmol/µl
PSD Test Standard	Angiotensin I	6.5	2.0 pmol/µl
CID Test Standard	Substance P-amide	6.9	2.0 pmol/µl

## 3 Preparing Matrix and Standards

See Section 7, Storing the Kit, for storage and stability conditions of prepared reagents.

After you use up the matrices provided in the kit, you can use commercially available CHCA and sinapinic acid matrices to analyze standards.

**WARNING. CHEMICAL HAZARD.** Diluents (with acetonitrile) are flammable liquids and vapors. They may cause eye, skin, and respiratory tract irritation, central nervous system depression, and heart, liver, and kidney damage. Please read the MSDS and follow the handling instructions. Wear appropriate protective eyewear, clothing, and gloves.

**CAUTION. CHEMICAL HAZARD.** Alpha-cyano-4-hydroxycinnamic acid (CHCA) may cause eye, skin, and respiratory tract irritation. Please read the MSDS and follow the handling instructions. Wear appropriate protective eyewear, clothing, and gloves.

**CAUTION. CHEMICAL HAZARD.** Sinapinic acid may cause eye, skin, and respiratory tract irritation. Please read the MSDS and follow the handling instructions. Wear appropriate protective eyewear, clothing, and gloves.

**CAUTION. CHEMICAL HAZARD.** Calibration Mix 1 may cause eye, skin, and respiratory tract irritation. Please read the MSDS and follow the handling instructions. Wear appropriate protective eyewear, clothing, and gloves.

**WARNING. CHEMICAL HAZARD.** Calibration Mix 2 may cause an allergic skin and respiratory tract reaction. Exposure may cause eye, skin, and respiratory tract irritation. Please read the MSDS and follow the handling instructions. Wear appropriate protective eyewear, clothing, and gloves.

**CAUTION. CHEMICAL HAZARD.** Calibration Mix 3 may cause eye, skin, and respiratory tract irritation. Please read the MSDS and follow the handling instructions. Wear appropriate protective eyewear, clothing, and gloves.

**CAUTION. CHEMICAL HAZARD.** TIS Test Mixture may cause eye, skin, and respiratory tract irritation. Please read the MSDS and follow the handling instructions. Wear appropriate protective eyewear, clothing, and gloves.

**Important. PSD Test Standard.** Please read the MSDS and follow the handling instructions. Wear appropriate protective eyewear, clothing, and gloves.

**Important. CID Test Standard.** Please read the MSDS and follow the handling instructions. Wear appropriate protective eyewear, clothing, and gloves.

## CHCA matrix

Use CHCA matrix for all standards *except* Calibration Mixture 3.

To prepare CHCA matrix:

1. Add the entire contents of the **Matrix A Diluent** vial to the **Matrix A:CHCA** vial.
2. Vortex for 1 minute.
3. Centrifuge for 20 seconds to remove any undissolved matrix from the solution. Alternatively, allow the solution to sit for 5 minutes until undissolved matrix settles.

Use the supernatant for sample preparation.

## Sinapinic acid matrix

Use sinapinic acid matrix for Calibration Mixture 3.

To prepare sinapinic acid matrix:

1. Add the entire contents of the **Matrix B Diluent** vial to the **Matrix B:Sinapinic Acid** vial.
2. Vortex for 1 minute.
3. Centrifuge for 20 seconds to remove any undissolved matrix from the solution. Alternatively, allow the solution to sit for 5 minutes until undissolved matrix settles.

Use the supernatant for sample preparation.

## Standards

The final concentration for each standard after mixing with matrix is listed in Section 2, Materials.

To prepare the standards:

1. Add 100  $\mu$ l of Standard Diluent to each of the six standard vials.
2. Vortex standard vials.
3. Add 24  $\mu$ l of the appropriate reconstituted matrix to an empty 0.5-ml microcentrifuge tube:
  - **CHCA matrix**—Calibration mixture 1 and 2, PSD Test Standard, CID Test Standard, TIS Test Mixture
  - **Sinapinic Acid matrix**—Calibration mixture 3
4. Add 1  $\mu$ l of the desired standard stock solution to the 0.5 ml microcentrifuge tube. Place the pipet tip into the matrix, then dispense the standard to ensure mixing.
5. Vortex briefly at low speed.

---

## 4 Loading Matrix:Standard on Sample Plates

Each matrix:standard preparation yields 25  $\mu$ l, enough to load approximately 25 sample positions.

To load a plate:

1. Load 0.5 to 1.0  $\mu$ l of premixed matrix:standard solution on the sample plate.
2. Allow the mixture to air dry until all solvent is evaporated, usually less than 5 minutes.

Analyze within one day for best results.

---

## 5 Analyzing Standards

### Standard methods on your system

Your Voyager workstation includes standard methods created during factory testing of your instrument. Standard methods contain typical parameters for a given mass or mass range. Standard methods are useful as a starting point when creating methods to analyze the standards in the Peptide Mass Standards Kit.

### Analyzing standards

Analyze the standards according to the needs of your application. Refer to Section 6, Peptide Standard Spectra and Masses, for representative spectra and mass assignments for standards and matrices in the kit.

## 6 Peptide Standard Spectra and Masses

The following figures show representative spectra for test mixtures. Masses are included in the spectra for peak identification only. Use the precise masses listed in Table 1 on page 6 for calibration.

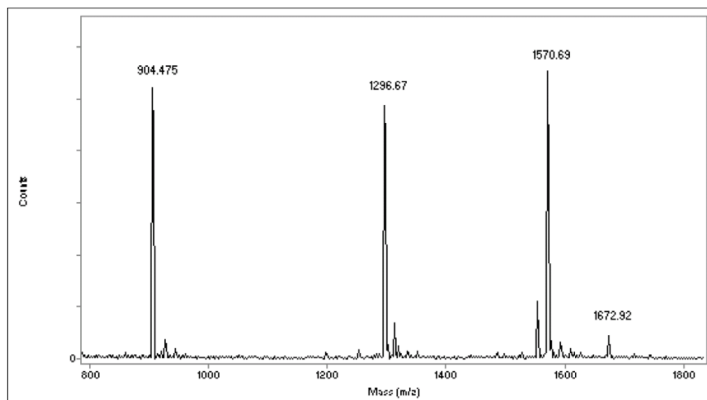


Figure 1 Calibration Mixture 1, Linear Mode

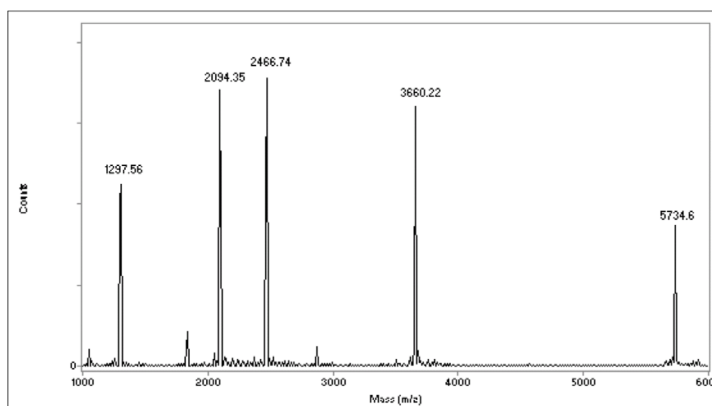


Figure 2 Calibration Mixture 2, Linear Mode

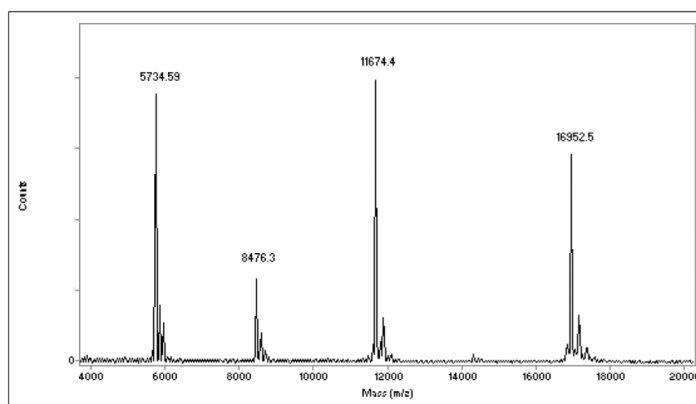
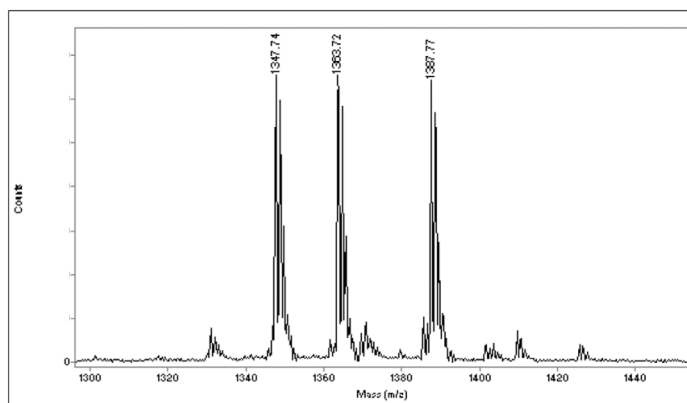
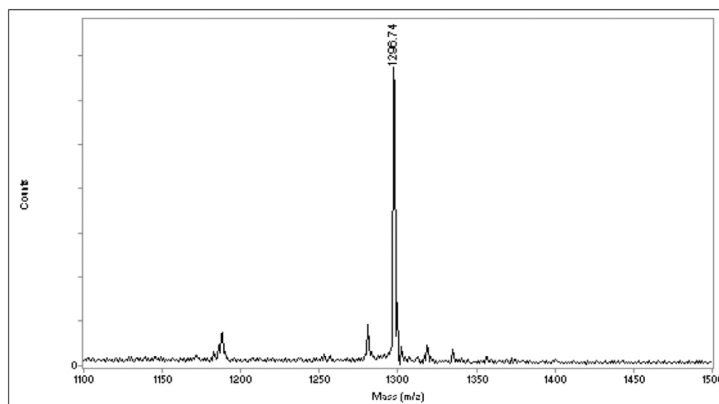


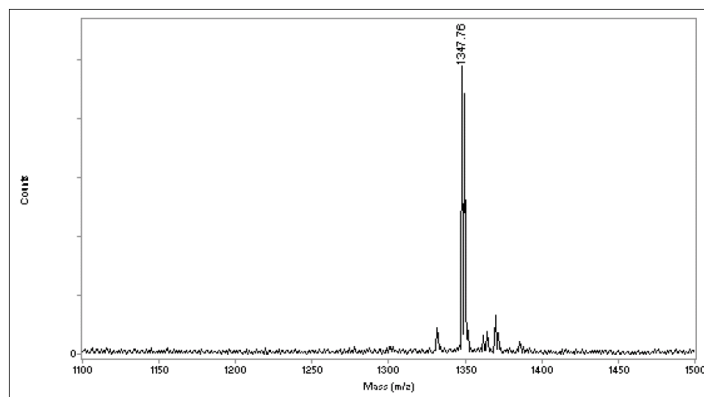
Figure 3 Calibration Mixture 3, Linear Mode



**Figure 4 TIS Test Mixture, Reflector Mode**



**Figure 5 PSD Test Standard, PSD Mode**



**Figure 6 CID Test Standard, PSD Mode**

Use the masses listed in Table 1 for calibration.

**Table 1 Mass Assignments for Standards and Matrices**

Name	Charge (n)	(M+nH) <sup>+</sup> Average	(M+nH) <sup>+</sup> Monoisotopic
<b>Matrix</b>			
CHCA matrix	+1	190.18	190.0504
CHCA matrix (dimer)	+1	379.35	379.0930
<b>Calibration Mixture 1</b>			
des-Arg <sup>1</sup> -Bradykinin	+1	905.05	904.4681
Angiotensin I	+1	1,297.51	1,296.6853
Glu <sup>1</sup> -Fibrinopeptide B	+1	1,297.51	1,570.6774
Neurotensin	+1	1,673.96	1,672.9175
<b>Calibration Mixture 2</b>			
Angiotensin I	+1	1,297.51	1,296.6853
ACTH (1–17 clip)	+1	2,094.46	2,093.0867
ACTH (18–39 clip)	+1	2,466.72	2,465.1989
ACTH (7–38 clip)	+1	3,660.19	3,657.9294
Insulin (bovine)	+1	5,734.59	5,730.6087
	+2	2,867.80	2,865.8083
<b>Calibration Mixture 3</b>			
Insulin (bovine)	+1	5,734.59	--
	+2	2,867.80	--
Thioredoxin (E. coli)	+1	11,674.48	--
	+2	5,837.74	--
Apomyoglobin (horse)	+1	16,952.56	--
	+2	8,476.78	--
<b>PSD Test Standard</b>			
Angiotensin I	+1	1,297.51	1,296.6853
<b>PSD Test Standard</b>			
Substance P-amide	+1	1,348.66	1,347.7360
<b>TIS Test Mixture</b>			
Substance P-amide	+1	1,348.66	1,347.7360
Tyr <sup>8</sup> -Substance P-amide	+1	1,364.66	1,387.7673
Pro <sup>9</sup> -Substance P-amide	+1	1,388.73	1,387.7673

---

## 7 Storing The Kit

Store the Peptide Mass Standards Kit for Calibration of AB SCIEX MALDI-TOF™ Instruments and components of the kit under the following conditions. Avoid prolonged exposure to light.

Kit Component	Storage Temperature	Stability
Unopened kit	-20°C	1 year from date of shipment
Reconstituted standards	-20°C	6 months
Reconstituted matrix	4°C	1 week

- By telephone: Dial +1 877.740.2129
- By fax: Dial +1 650.627.2803

---

## 8 Ordering Information

To place an order from the U.S. or Canada, dial **1.877.740.2129**, then follow the voice instructions

Item	Quantity	Part Number
Peptide Mass Standards Kit for Calibration of AB SCIEX MALDI-TOF™ Instruments	1 kit	P2-3143-00
BSA Test Standard Kit	1 kit	2 2158 00
IgG Mass Standard Kit	1 kit	GEN602151
Sequazyme Peptide Mass Standards Install Kit, includes: <ul style="list-style-type: none"><li>• Sequazyme Peptide Mass Standards Kit</li><li>• BSA Test Standard Kit</li><li>• IgG Mass Standard Kit</li></ul>	1 kit	4316866

---

## 9 Technical Support

AB SCIEX is committed to meeting the needs of your research through enabling technologies like the Peptide Mass Standards Kit for Calibration of AB SCIEX MALDI-TOF™ Instruments. Our dedicated support staff is available to answer questions about using this product to the fullest extent possible. AB SCIEX offers a complete line of time-of-flight (TOF) mass spectrometry products to meet your analysis needs. Please contact your AB SCIEX representative for technical and ordering information.

AB SCIEX publishes a continuing series of Application Notes and Technical Notes highlighting ladder sequencing applications and strategies. For a publications list, or for further details or answers to questions related to other products, contact AB SCIEX using the information on the last page.

### Contacting Technical Support in North America

To contact technical support:

© 2010 AB SCIEX. The trademarks mentioned herein are the property of AB Sciex Pte. Ltd. or their respective owners. AB SCIEX™ is being used under license. All rights reserved.

**For Research Use Only. Not for use in diagnostic procedures.**

Information in this document is subject to change without notice. AB SCIEX assumes no responsibility for any errors that may appear in this document. This document is believed to be complete and accurate at the time of publication. In no event shall AB SCIEX be liable for incidental, special, multiple, or consequential damages in connection with or arising from the use of this document.

**AB SCIEX**

110 Marsh Road  
Foster City, CA 94404 USA

Phone: +1 877.740.2129

Fax: +1 650.627.2803

[www.absciex.com](http://www.absciex.com)



Printed in the USA, 08/2010  
Part Number 4317090 Rev. C